

## Dane techniczne:

Kubatura:	1310 m <sup>3</sup>
Powierzchnia zabudowy:	265.76 m <sup>2</sup>
Powierzchnia całkowita:	438.43 m <sup>2</sup>
Powierzchnia netto:	336.1 m <sup>2</sup>
Powierzchnia użytkowa:	315.88 m <sup>2</sup>
Wymiary domu:	18.16 x 24.6 m
Minimalne wymiary działki:	26.16 x 32.6 m
Wysokość do kalenicy:	9,92 m / 32,54 ft
Powierzchnia dachu:	387.75 m <sup>2</sup>
Kąt nachylenia dachu:	27 degrees

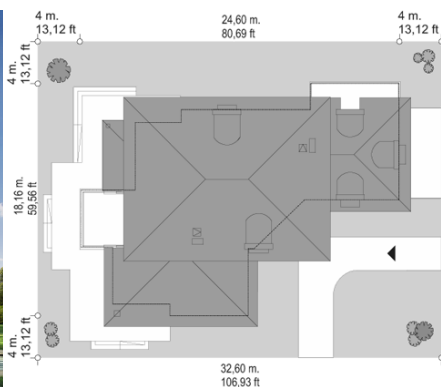
## Koszty realizacji:

Realizacja stanu surowego otwartego:	81 100
Realizacja stanu surowego zamkniętego:	125 700
Koszt robót wykończeniowych:	126 900
Realizacja domu pod klucz:	252 500

Koszty są podane w cenach netto, należy doliczyć podatek VAT

## Materiały:

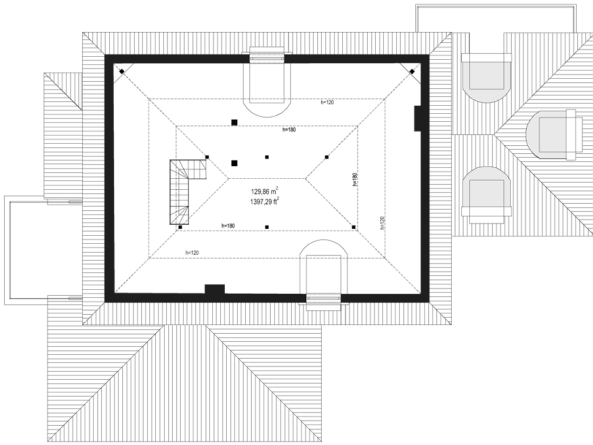
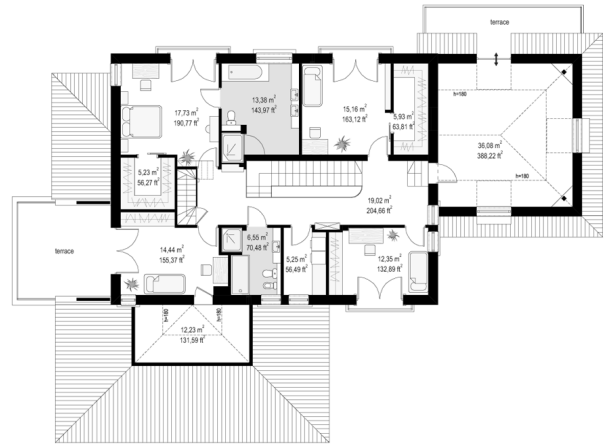
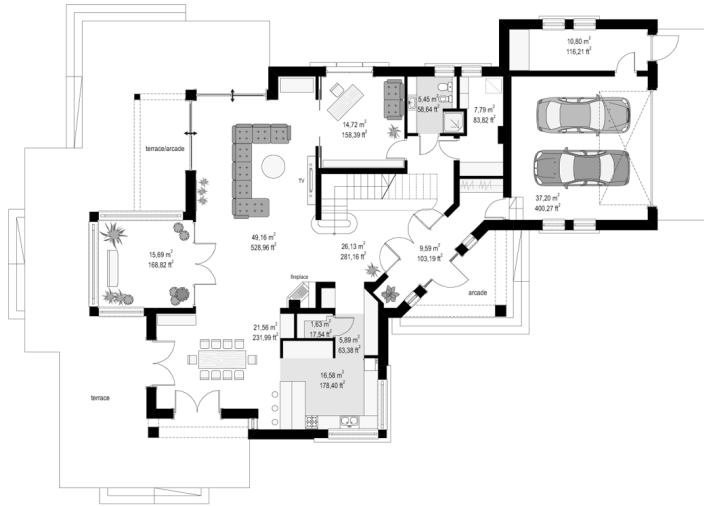
- Foundations - concrete bench and foundation walls with concrete blocks
- External walls - brick walls -porotherm 25 blocks + polystyrene + thin-layer plaster
- Ceiling - Teriva
- Roof - tile
- Elevation - thin-layer plaster on polystyrene

**CENA PROJEKTU: 1800.00 \$**

	Energy-saving package	bezpł.
	Ventilation and fireplace package	90
	Central vacuum package	70
	The electronic version of the project	120
	Solar installation package	70
	Underfloor heating package	80
	Heat pump package	70
	Water jacket package	70
	Boiler for solid fuel package	80
	Air conditioning package	80
	Fencing projects	140
	Septic tanks sealed package	bezpł.

Malibu house plan is a great suburban mansion for a nice plot. The building impresses the beautiful open house spaces to the garden, and a very representative entrance. This story house, was designed combining three units: a two-storey main body of the building, and two ground-floor with attics - garage and hiding a kitchen and dining area. Input from the chamfered corner through the arcade is a violation of the mold of the typical entrance to the residence. The inspiration for Malibu house were patterns of Mediterranean, Italian or French villa, which distinguishes it from other Polish tradition architecture. Breach of the principle of symmetry body and interior gave freedom in shaping the function of each room. Malibu house as a residence in the southern style is surrounded by terraces, arcades, large glazed, connecting the interior with the surrounding garden. Additional variety are balconies and terraces on each floor. The interior of the house is: one open living area with living room, dining room, beautiful glass conservatory, the elegant lobby and partly open kitchen. In addition, the ground floor room - office, and a garage and technical rooms is planned. On the first floor are four bedrooms with wardrobes and two bathrooms, and laundry room, recreation room above the garage, and separate stairs to the attic above the floor, where you can arrange a large room for example studio, or leave the attic. The building is a large, representative, but it is designed without unnecessary extravagance, with attention to the functionality of each piece of interior. There is also available a mirror version of the Malibu house plan.

# Rzuty:



# Elewacje:



