

Dane techniczne:

Kubatura:	758 m ³
Powierzchnia zabudowy:	195.55 m ²
Powierzchnia całkowita:	252.77 m ²
Powierzchnia netto:	127.74 m ²
Powierzchnia użytkowa:	120.23 m ²
Wymiary domu:	14.48 x 17.3 m
Minimalne wymiary działki:	22.48 x 25.3 m
Wysokość do kalenicy:	7,12 m / 23,35 ft
Powierzchnia dachu:	306.44 m ²
Kąt nachylenia dachu:	30 degrees

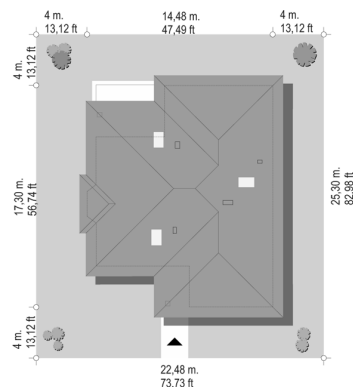
Koszty realizacji:

Realizacja stanu surowego otwartego:	50 400
Realizacja stanu surowego zamkniętego:	72 600
Koszt robót wykończeniowych:	64 700
Realizacja domu pod klucz:	137 300

Koszty są podane w cenach netto, należy doliczyć podatek VAT

Materiały:

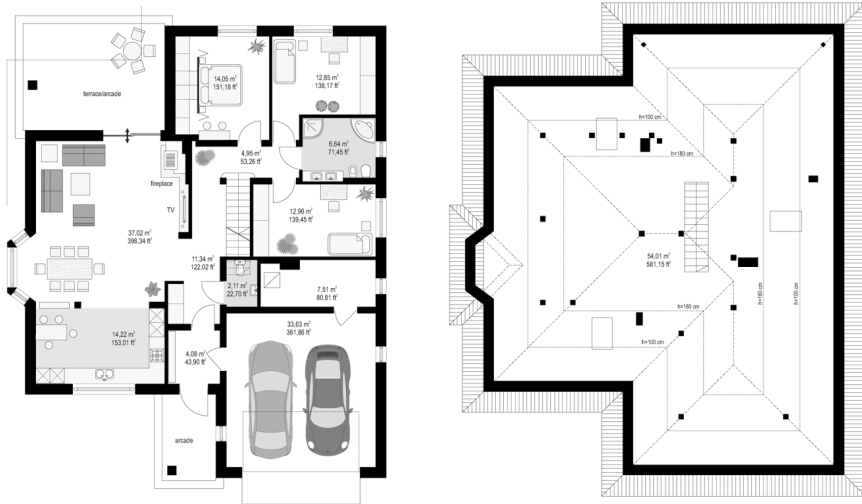
- Foundations - concrete bench and foundation walls with concrete blocks
- External walls - brick walls -porotherm 25 blocks + polystyrene + thin-layer plaster
- Ceiling - Teriva
- Elevation - thin-layer plaster on polystyrene
- Roof - tile

**CENA PROJEKTU: 1070.00 \$**

	Energy-saving package	bezpł.
	Ventilation and fireplace package	90
	Central vacuum package	70
	The electronic version of the project	120
	Solar installation package	70
	Underfloor heating package	80
	Heat pump package	70
	Water jacket package	70
	Boiler for solid fuel package	80
	Air conditioning package	80
	Fencing projects	140
	Septic tanks sealed package	bezpł.

Natalie 3 is a variant version of the Natalie house plan. While retaining the same shape body of the building, and the layout of the rooms we were able to design an additional - third bedroom on the ground floor, so in the house can live a family of four people living only on the ground floor, leaving an unfinished attic. Natalia 3 is therefore a one-story house with an attic possible to adapt for utility purposes in the second stage. In the project of house, on the ground floor, designed open day space - a living room with dining area with bay window, kitchen and hall, and night part - with three bedrooms and a bathroom. In addition, on the ground floor there is a garage for two cars and boiler room - accessible from the atrium. The attic can be used as an usable attic with additional rooms. Stairs can be built or left open, as an additional decoration of the living room, next to a corner fireplace, a television wall, bay window of dining room or wide balcony door, opening the room to the partially covered terrace and garden. There is also a mirror version of the Natalie 3 house plan.

Rzuty:



Elewacje:

