

## Dane techniczne:

Kubatura:	317 m <sup>3</sup>
Powierzchnia zabudowy:	55.88 m <sup>2</sup>
Powierzchnia całkowita:	79.74 m <sup>2</sup>
Powierzchnia netto:	66.62 m <sup>2</sup>
Powierzchnia użytkowa:	66.62 m <sup>2</sup>
Wymiary domu:	9 x 7.55 m
Minimalne wymiary działki:	17.3 x 15.55 m
Wysokość do kalenicy:	6,68 m / 21,91 ft
Powierzchnia dachu:	122.5 m <sup>2</sup>
Kąt nachylenia dachu:	45 degrees

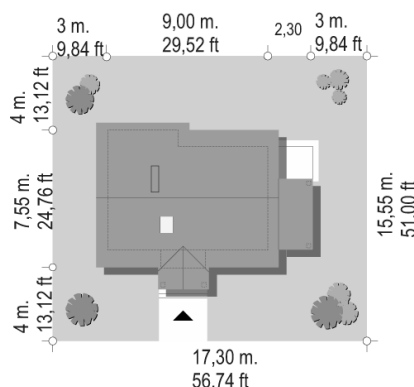
## Koszty realizacji:

Realizacja stanu surowego otwartego:	13 900
Realizacja stanu surowego zamkniętego:	22 000
Koszt robót wykończeniowych:	26 800
Realizacja domu pod klucz:	48 700

Koszty są podane w cenach netto, należy doliczyć podatek VAT

## Materiały:

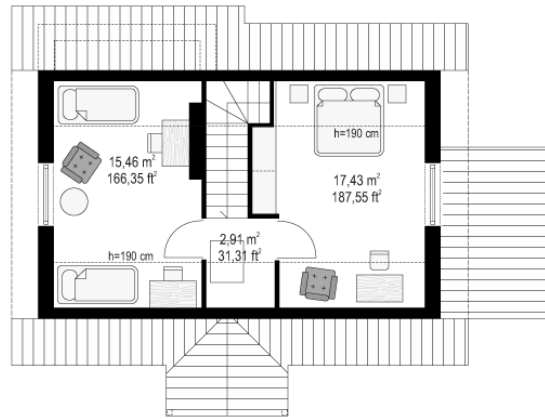
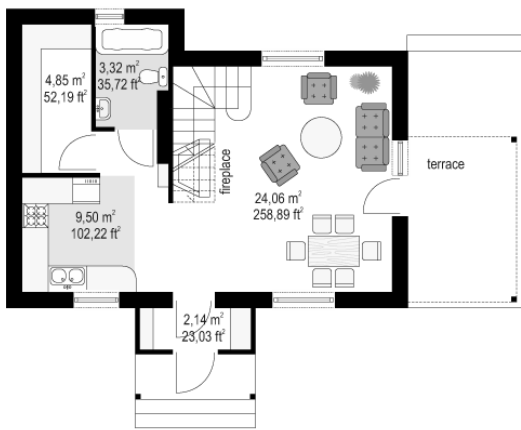
- Foundations - poured concrete
- External walls - brick walls - aerated concrete + polystyrene or ceramic brick + polystyrene
- Ceiling - wood or reinforced concrete Teriva
- Elevation - thin-layer plaster
- Roof - tile or meatal roofing tile

**CENA PROJEKTU: 870.00 \$**

	Energy-saving package	bezpł.
	Ventilation and fireplace package	90
	Central vacuum package	70
	The electronic version of the project	120
	Air conditioning package	80
	Fencing projects	140
	Septic tanks sealed package	bezpł.

Crumb house plan is an extended version of Pine house plan. The building has been increased by utility room on the ground floor, porch with a visor before entering and partly covered terrace. Crumb house plan is a great option for a small family, it can serve both as a holiday house as well as year-round. The building is cheap in construction and subsequent operation. Its shape has been formed with a view to possible expansion. Partial basement can be helpful when you need to place in your home for example hydrovor. There is a large living room with fireplace on the ground floor, with access to a partially covered terrace. In the attic we designed two large bedrooms. Our studio has a mirror version of Crumb and the version without basement or with complete basement.

## Rzuty:



## Elewacje:

