

## Dane techniczne:

Kubatura:	884 m <sup>3</sup>
Powierzchnia zabudowy:	175.9 m <sup>2</sup>
Powierzchnia całkowita:	292.79 m <sup>2</sup>
Powierzchnia netto:	205.57 m <sup>2</sup>
Powierzchnia użytkowa:	184.97 m <sup>2</sup>
Wymiary domu:	18.58 x 11.39 m
Minimalne wymiary działki:	28.01 x 20.34 m
Wysokość do kalenicy:	8,55 m / 28,04 ft
Powierzchnia dachu:	319 m <sup>2</sup>
Kąt nachylenia dachu:	45, 34 i 39 stopni

## Koszty realizacji:

Realizacja stanu surowego otwartego:	52 000
Realizacja stanu surowego zamkniętego:	80 900
Koszt robót wykończeniowych:	72 100
Realizacja domu pod klucz:	153 000

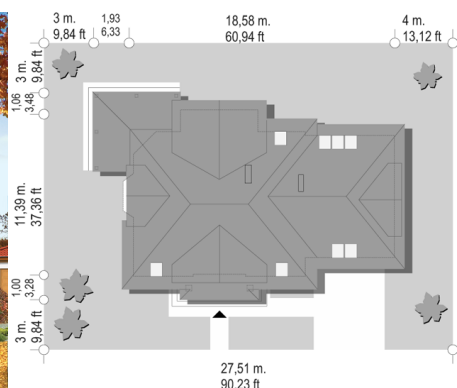
Koszty są podane w cenach netto, należy doliczyć podatek VAT

## Materiały:

- Foundations - concrete bench and foundation walls with concrete blocks
- External walls - bilayer walls -porotherm blocks
- Ceiling - Teriva
- Roof - tile
- Elevation - thin-layer plaster



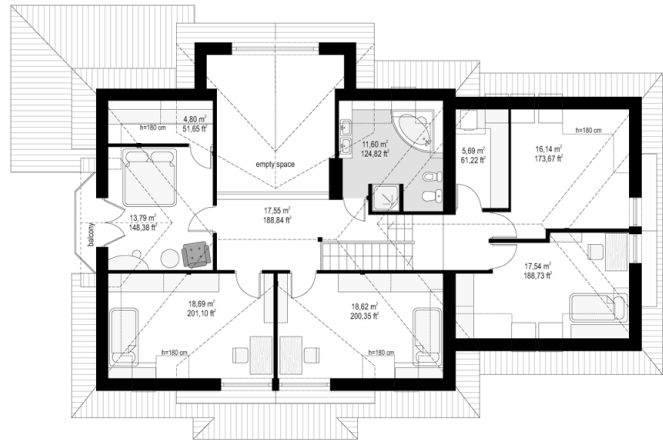
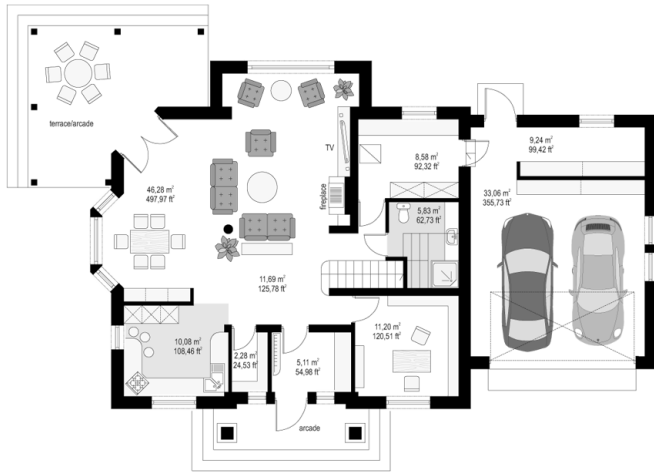
## CENA PROJEKTU: 1070.00 \$



	Energy-saving package	bezpł.
	Ventilation and fireplace package	90
	Central vacuum package	70
	The electronic version of the project	120
	Solar installation package	70
	Underfloor heating package	80
	Heat pump package	70
	Water jacket package	70
	Boiler for solid fuel package	80
	Air conditioning package	80
	Fencing projects	140
	Septic tanks sealed package	bezpł.

Ruby house plan is a spacious house for a family of 4-6 people, of uncommon architecture and an interesting interior. The project has a non-standard solutions, as a large window in the living room with the opening of space to the mezzanine in the attic, or a corner, covered arcade with a terrace. These details add to the project original word. The interior of the house is a thoughtful and maximum functional at the same time. On the ground floor besides a large open space was designed daily extra room, while in the attic was designed five bedrooms and a large bathroom. There is also available mirror version of this house plan.

## Rzuty:



## Elewacje:

