

Dane techniczne:

Kubatura:	798 m ³
Powierzchnia zabudowy:	157.43 m ²
Powierzchnia całkowita:	261.49 m ²
Powierzchnia netto:	197.36 m ²
Powierzchnia użytkowa:	171.15 m ²
Wymiary domu:	16.39 x 11.39 m
Minimalne wymiary działki:	25.32 x 19.45 m
Wysokość do kalenicy:	8,55 / 28,044 ft
Powierzchnia dachu:	297.13 m ²
Kąt nachylenia dachu:	34, 39 i 45 degrees

Koszty realizacji:

Realizacja stanu surowego otwartego:	54 200
Realizacja stanu surowego zamkniętego:	77 200
Koszt robót wykończeniowych:	58 200
Realizacja domu pod klucz:	135 300

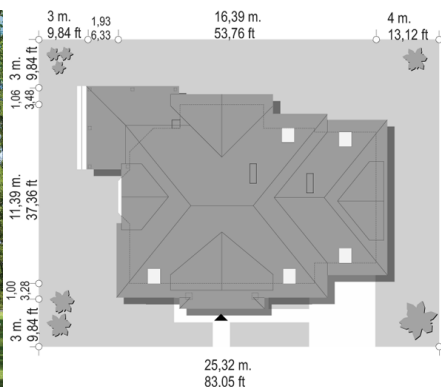
Koszty są podane w cenach netto, należy doliczyć podatek VAT

Materiały:

- Foundations - concrete bench and foundation walls with concrete blocks
- External walls - brick walls - porotherm blocks + polystyrene + thin-layer plaster
- Ceiling - Teriva
- Elevation - thin-layer plaster on polystyrene
- Roof - tile



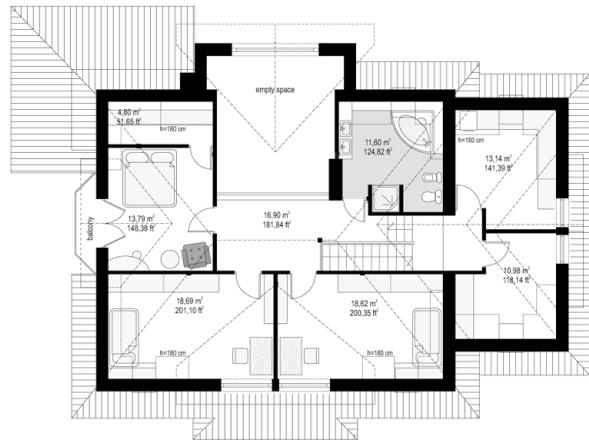
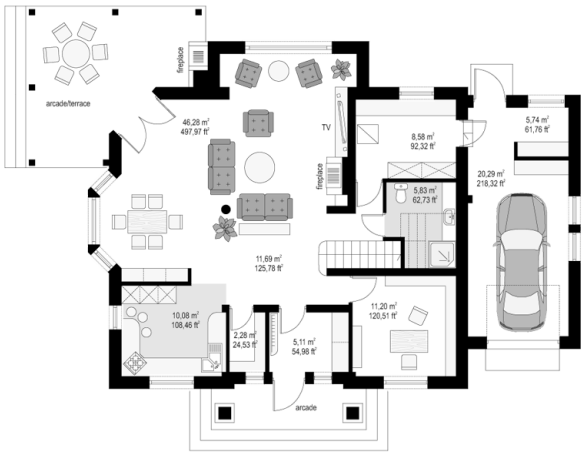
CENA PROJEKTU: 1070.00 \$



	Energy-saving package	bezpł.
	Ventilation and fireplace package	90
	Central vacuum package	70
	The electronic version of the project	120
	Solar installation package	70
	Underfloor heating package	80
	Heat pump package	70
	Water jacket package	70
	Boiler for solid fuel package	80
	Air conditioning package	80
	Fencing projects	140
	Septic tanks sealed package	bezpł.

Rubin 2 house is a variant version of the popular house Rubin - this time reduced with single garage. House is designed for a family of four-five people. Storey block with usable attic, consists of residential part and built another on the side garage. The entire house is covered by hipped roof, with large dormer windows on each elevation. Quiet suburban architecture of the house and interesting details, such as bay windows, porches with columns and arched windows, connects with functionally designed interior of the building. A special attraction of the solid is large front dormer with entrance porch and columns, large garden arcades, where under the roofed you can shelter from the rain or hot sun, and a large two-story living room window, opening interior of the garden. Interior of the ground floor is mainly open daily space, with living room, dining room and hall. Salon is partially open to the mezzanine of the attic, so that family members will be able to enjoy the increased space of the living room. On the ground floor was planned kitchen, an extra room - office or for example, a guest bedroom and a boiler room and a garage with a garden. In Rubin 2, in the attic there are provided four bedrooms with dressing and built-in wardrobes, a large bathroom and a laundry-drying. From the hall - mezzanine in the attic opens through a high window impressive view of the living room underneath and a garden. There is also available mirror version of this house plan.

Rzuty:



Elewacje:

