

Dane techniczne:

Kubatura:	998 m ³
Powierzchnia zabudowy:	177.03 m ²
Powierzchnia całkowita:	332.36 m ²
Powierzchnia netto:	240 m ²
Powierzchnia użytkowa:	223.26 m ²
Wymiary domu:	13.3 x 16.1 m
Minimalne wymiary działki:	19.3 x 24.93 m
Wysokość do kalenicy:	9,51 m (9,81 m z podmurówką)
Powierzchnia dachu:	245.7 m ²
Kąt nachylenia dachu:	25 stopni

Koszty realizacji:

Realizacja stanu surowego otwartego:	65 300
Realizacja stanu surowego zamkniętego:	92 400
Koszt robót wykończeniowych:	75 300
Realizacja domu pod klucz:	167 600

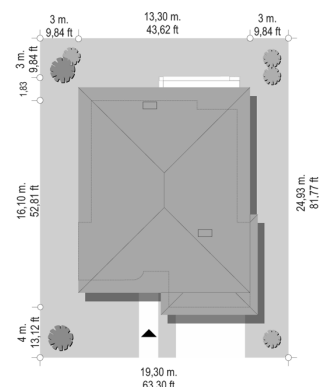
Koszty są podane w cenach netto, należy doliczyć podatek VAT

Materiały:

- Foundations - concrete bench and foundation walls with concrete blocks
- External walls - bilayer: ceramic bricks U220 + polystyrene
- Ceiling - monolithic reinforced concrete slab
- Roof - tile
- Elevation - thin-layer plaster



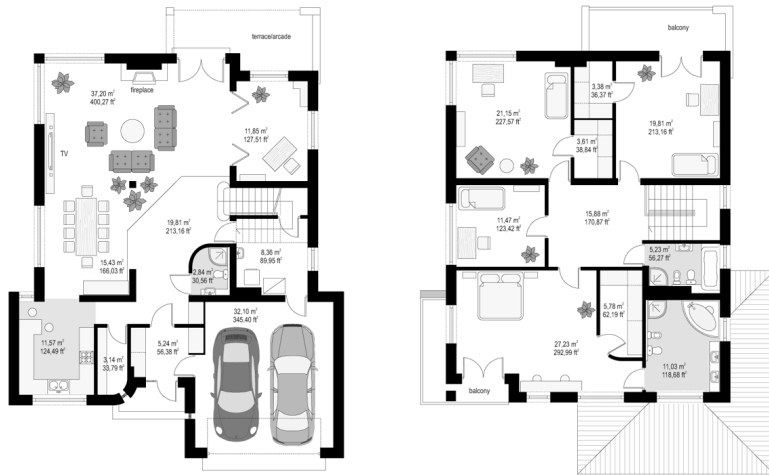
CENA PROJEKTU: 1110.00 \$



	Energy-saving package	bezpł.
	Ventilation and fireplace package	90
	Central vacuum package	70
	The electronic version of the project	120
	Solar installation package	70
	Underfloor heating package	80
	Heat pump package	70
	Water jacket package	70
	Boiler for solid fuel package	80
	Air conditioning package	80
	Fencing projects	140
	Septic tanks sealed package	bezpł.

House plan Topaz is an elegant, one-storey detached house. Building has modern but not exaggerated architecture. House plan Topaz comes in two variant version, with a diverse front part. The block of the house is varied by several used materials, bay windows and roofs. Entrance to the apartment is accented by an arcade with arched, clinker side wall. The interior is versatile, comfortable apartment for a family of 4-6 people. It consists of four bedrooms upstairs, each of which has its own dressing room. In the parents' bedroom they designed an extra bathroom. At the ground floor we have a living room with dining room, hall, kitchen and extra room - office. The house also provides garages and economic space. Part of the garden is a large glass house - open from the living room the plot surrounding the house. The interior is universal and comfortable apartment for a family of 4-6 people. It consists of four bedrooms upstairs, each of which has its own dressing room. In the parents' bedroom we designed an extra bathroom. At the ground floor we have a living room connected with dining room, hall, kitchen and an extra room - study room. In house also provides garages and utility area. Garden part of the house are large glasses - open from the living room to the surrounding plot. There is also available mirror version of this house plan.

Rzuty:



Elewacje:

