

# 160.09 m<sup>2</sup>

# House in birch-trees

## Dane techniczne:

Kubatura:	802 m <sup>3</sup>
Powierzchnia zabudowy:	147.47 m <sup>2</sup>
Powierzchnia całkowita:	235.85 m <sup>2</sup>
Powierzchnia netto:	168.22 m <sup>2</sup>
Powierzchnia użytkowa:	160.09 m <sup>2</sup>
Wymiary domu:	15.46 x 12.03 m
Minimalne wymiary działki:	22.56 x 20.03 m
Wysokość do kalenicy:	8,42 m / 27,62 ft
Powierzchnia dachu:	264.1 m <sup>2</sup>
Kąt nachylenia dachu:	42 degrees

## Koszty realizacji:

Realizacja stanu surowego otwartego:	49 100
Realizacja stanu surowego zamkniętego:	70 300
Koszt robót wykończeniowych:	74 900
Realizacja domu pod klucz:	145 200

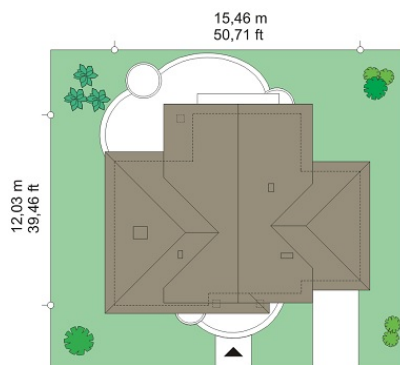
Koszty są podane w cenach netto, należy doliczyć podatek VAT

## Materiały:

- Foundations - Concrete benches and foundation walls of concrete blocks
- Walls: brick walls - porotherm blocks 25 + polystyrene + thin-layer plaster
- Ceiling - Teriva
- Elevation - thin-layer plaster on polystyrene
- Roof - tile



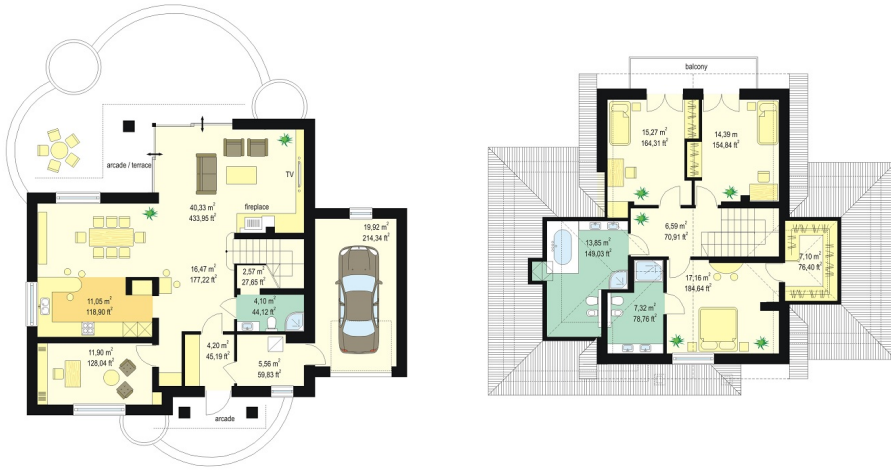
**CENA PROJEKTU: 1040.00 \$**



	Energy-saving package	bezpł.
	Ventilation and fireplace package	90
	Central vacuum package	70
	The electronic version of the project	120
	Solar installation package	70
	Underfloor heating package	80
	Heat pump package	70
	Water jacket package	70
	Boiler for solid fuel package	80
	Air conditioning package	80
	Fencing projects	140
	Septic tanks sealed package	bezpł.

House in birch-trees is a building for a family of 4-5 people. This one-storey building with usable attic, was designed on the set of "L" letter with built of the garage. The house is covered by a gable roof, and composed with the two three-fall roofs. The solid of building was decorated with arcades and balconies. The whole creates an attractive, slightly spreading silhouette of the of a suburban villa, with low coming down from eaves of roofs that's allow to preserve the human scale of the building. Interesting solid of building, carefully chosen details and finishes, result in a very successful appearance of the house. The interior of house includes the living area, the utility and extra room on the ground floor, and three bedrooms on the attic. On the ground floor a hall is connected to the lounge, dining room and kitchen and form a common living space, open by wide glazing to the terrace and garden. A little hidden extra room can serve as study or an extra bedroom. On the top floor there are three bedrooms with a slight slants (thanks to the high elbow wall of the main solid of the house) and two bathrooms, including one accessible from the parents' bedroom. There is also a private quite large wardrobe in the room above the garage. There is a mirror version of this house.

## Rzuty:



## Elewacje:



MG Projekt Pracownia Architektoniczna s.c. ul. Uczniowska 14 03-112 Warszawa  
 tel.: 22 676 66 83, 22 676 66 88, fax: 22 676 66 82, mob.: 600 392 884,  
 tylko przedstawiciele 606 200 136, [www.mgprojekt.com.pl](http://www.mgprojekt.com.pl),  
[mgprojekt@mgprojekt.com.pl](mailto:mgprojekt@mgprojekt.com.pl)

MG Projekt