

## Dane techniczne:

Kubatura:	720 m <sup>3</sup>
Powierzchnia zabudowy:	104.15 m <sup>2</sup>
Powierzchnia całkowita:	191.82 m <sup>2</sup>
Powierzchnia netto:	133.29 m <sup>2</sup>
Powierzchnia użytkowa:	127.41 m <sup>2</sup>
Wymiary domu:	12.36 x 9.26 m
Minimalne wymiary działki:	20.36 x 17.26 m
Wysokość do kalenicy:	8,67 m / 28,44 ft
Powierzchnia dachu:	185.35 m <sup>2</sup>
Kąt nachylenia dachu:	45 i 40 degrees

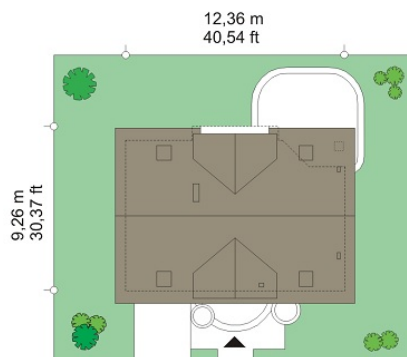
## Koszty realizacji:

Realizacja stanu surowego otwartego:	53 700
Realizacja stanu surowego zamkniętego:	75 600
Koszt robót wykończeniowych:	37 800
Realizacja domu pod klucz:	113 400

Koszty są podane w cenach netto, należy doliczyć podatek VAT

## Materiały:

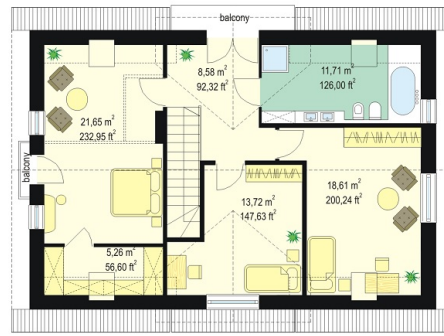
- Foundations - concrete bench and foundation walls with concrete blocks
- External walls - brick walls -porotherm 25 blocks + polystyrene + thin-layer plaster
- Ceiling - monolithic reinforced concrete
- Elevation - thin-layer plaster on polystyrene
- Roof - ceramic tile

**CENA PROJEKTU: 1000.00 \$**

	Energy-saving package	bezpł.
	Ventilation and fireplace package	90
	Central vacuum package	70
	The electronic version of the project	120
	Solar installation package	70
	Underfloor heating package	80
	Heat pump package	70
	Water jacket package	70
	Boiler for solid fuel package	80
	Air conditioning package	80
	Fencing projects	140

Clover house plan is a charming detached house for a family of four-five people - with attic, and built-in garage. Its simple shape and uncomplicated design allows for easy and inexpensive build. At the same time small area of the house, combined with functionality and a sensible layout of rooms, will give savings in subsequent maintenance of the building. The rectangular plan of the house cover a gabled roof, is decorated from the front and from the garden by wide dormer windows. External appearance combines traditional, solid form, with modern materials and architectural details. Light, simple shape, with symmetrical facades has the same time a lot of charm and elegance. The interior of the house was designed with the division on the ground floor - as living and utility part with a garage and attic - from bedroom of the household. On the ground floor managed to get a beautiful living room with dining area, connected with the spacious lobby, which exposes elegant staircase to the attic. On the lower floor there is a pretty easy to arrange kitchen, a large porch - connected with a garage and boiler room and toilet. From the living room the exit to the terrace and partly sheltered corner arcade was designed. In the attic there are designed three very nice bedroom and a large bathroom. Master bedroom has its own dressing room and little balcony. Alternatively we provide separation of partition wall of the fourth room, for example for a home office. There is also available a mirror version of this house plan.

## Rzuty:



## Elewacje:

