

Dane techniczne:

Kubatura:	1147 m ³
Powierzchnia zabudowy:	255 m ²
Powierzchnia całkowita:	255 m ²
Powierzchnia netto:	215.15 m ²
Powierzchnia użytkowa:	215.15 m ²
Wymiary domu:	25 x 15.43 m
Minimalne wymiary działki:	32 x 21.43 m
Wysokość do kalenicy:	7,00 m/22,96 ft
Powierzchnia dachu:	486.52 m ²
Kąt nachylenia dachu:	30 degrees

Koszty realizacji:

Realizacja stanu surowego otwartego:	65 010
Realizacja stanu surowego zamkniętego:	103 150
Koszt robót wykończeniowych:	96 930
Realizacja domu pod klucz:	200 070

Koszty są podane w cenach netto, należy doliczyć podatek VAT

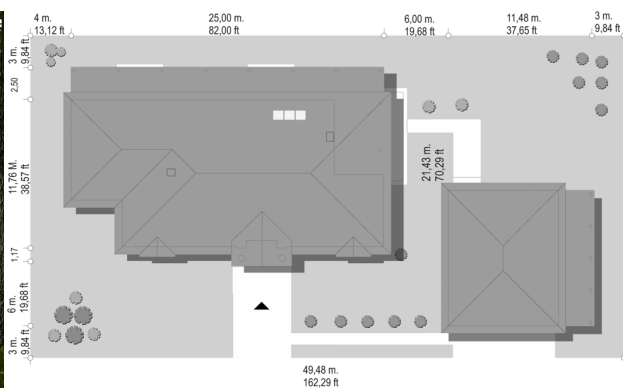
Materiały:

- Foundations - concrete bench and foundation walls with concrete blocks
- External walls - brick walls - autoclaved aerated concrete blocks + polystyrene + thin-layer plaster
- Ceiling - monolithic reinforced concrete
- Elevation - thin-layer plaster on polystyrene
- Roof - ceramic tile

WARNING!

The costs relate to the implementation of the project without garage.

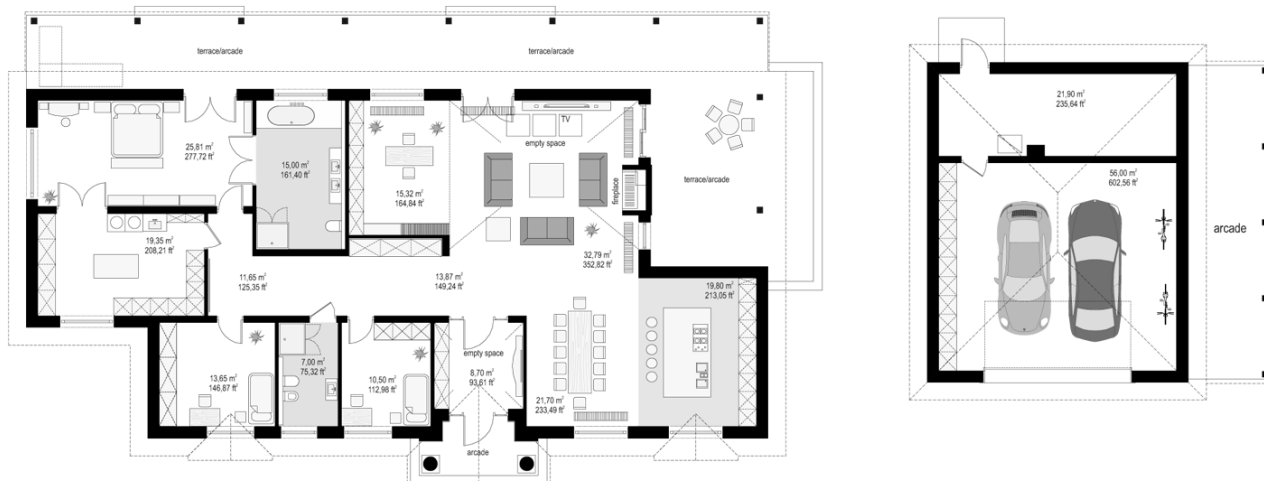
CENA PROJEKTU: 1610.00 \$



- Energy-saving package bezpł.
- Ventilation and fireplace package 90
- Central vacuum package 70
- The electronic version of the project 120
- Solar installation package 70
- Underfloor heating package 80
- Heat pump package 70
- Water jacket package 70
- Boiler for solid fuel package 80
- Air conditioning package 80
- Fencing projects 140
- Septic tanks sealed package bezpł.

Park Residence 4 is another version of the popular project Park Residence. House is a beautiful one storey rural villa, recalls the aristocratic manor house, or English or American manor house. Expansive oblong block, built on a rectangular plan, it is covered with a nice hipped roof. The house from the front is decorated with the elegant entrance portico. Garden elevation is a big oblong porch. Such covered terrace is the dream of many investors. House is ideal for suburban residence or a second farmhouse. Daily interior the house is a very simple layout of the rooms. The space without compromise. All rooms are large and easy to arrange. Daily interior is a combination of living, dining room, beautiful kitchen with an island and study - the library. Remaining space is a luxury apartment, with large walk-in closet and bathroom, and two additional rooms with private bathrooms - for children or visitors. House will appreciate the people for whom this is not the first investment in life. This is a very comfortable space. Architecture of the house is classic and timeless. House draws from the good, proven designs and never gets old. The building perfectly fit in with the surrounding nature. If you have big plot, you can afford to build a house and separate garage building. On a smaller plot you can also build only house without garage.

Rzuty:



Elewacje:

