

Dane techniczne:

Kubatura:	940 m ³
Powierzchnia zabudowy:	136.21 m ²
Powierzchnia całkowita:	237.04 m ²
Powierzchnia netto:	154.7 m ²
Powierzchnia użytkowa:	149.61 m ²
Wymiary domu:	12.64 x 11.6 m
Minimalne wymiary działki:	19.64 x 19.6 m
Wysokość do kalenicy:	8,40 m/27,55 ft
Powierzchnia dachu:	190.53 m ²
Kąt nachylenia dachu:	25 degrees

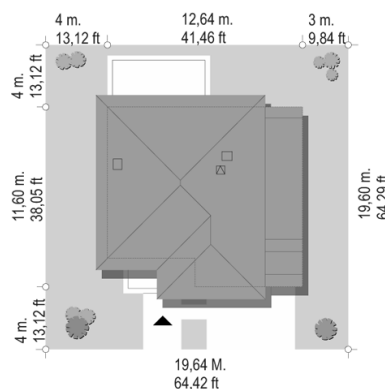
Koszty realizacji:

Realizacja stanu surowego otwartego:	41 880
Realizacja stanu surowego zamkniętego:	61 770
Koszt robót wykończeniowych:	75 920
Realizacja domu pod klucz:	137 690

Koszty są podane w cenach netto, należy doliczyć podatek VAT

Materiały:

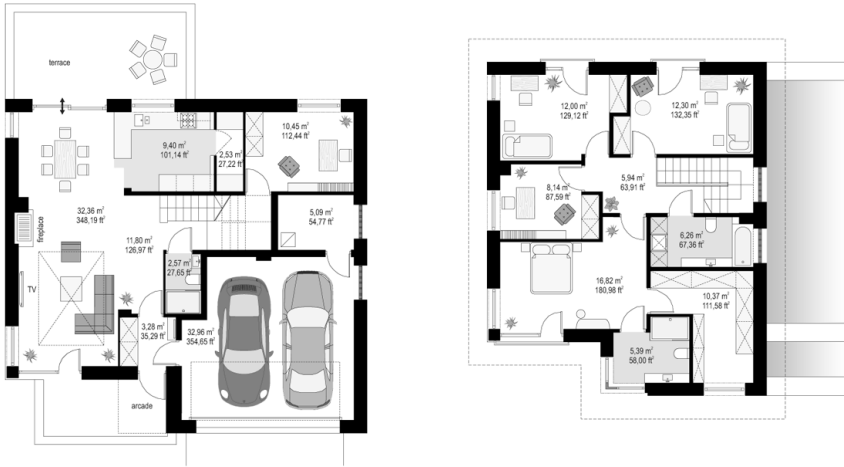
- Foundations - concrete bench and foundation walls with concrete blocks
- External walls - brick walls - porotherm 25 blocks + polystyrene + thin-layer plaster
- Ceiling - Teriva
- Elevation - thin-layer plaster on polystyrene
- Roof - ceramic tile

**CENA PROJEKTU: 1140.00 \$**

	Energy-saving package	bezpł.
	Ventilation and fireplace package	90
	Central vacuum package	70
	The electronic version of the project	120
	Solar installation package	70
	Underfloor heating package	80
	Heat pump package	70
	Water jacket package	70
	Boiler for solid fuel package	80
	Air conditioning package	80
	Fencing projects	140
	Septic tanks sealed package	bezpł.

Titan 3 house plan is a new version of the popular project Titan. Storey house, designed for a family of 4-6 people with, a compact block, built on a rectangular plan, and covered by an envelope roof, with build another garage. Building has simple design, is easy to build and inexpensive in later maintain. Thanks to the opening by large windows on the side and front elevation Titan 3 is perfectly suited to the plot of disadvantaged entry and access road in relation to the sun. House has garden and terrace behind the house, but thanks to large glazing of front corner the interior is bathed in the sun, even if the plot has entrance from the south. The interior of the ground floor is an open living space consisting of: living room, dining room, hall and kitchen. In addition, on the ground floor is provided a large double garage, boiler room, bathroom, pantry, and a room (office or bedroom). Upstairs there are four bedrooms, two bathrooms and a large dressing room with the parents' bedroom. Over the first floor we still have the attic. House has a modern but peaceful architecture. Details were chosen in toned way, so house is modern, but not avant-garde. Titanium 3 is an excellent choice for investors who appreciate comfort, convenience and practicability. House has good isolation and energy efficient solutions

Rzuty:



Elewacje:

