

### Dane techniczne:

Kubatura:	890 m <sup>3</sup>
Powierzchnia zabudowy:	121.72 m <sup>2</sup>
Powierzchnia całkowita:	226.54 m <sup>2</sup>
Powierzchnia netto:	139.79 m <sup>2</sup>
Powierzchnia użytkowa:	134.26 m <sup>2</sup>
Wymiary domu:	12.6 x 11.56 m
Minimalne wymiary działki:	19.6 x 19.56 m
Wysokość do kalenicy:	8,40 m/27,55 ft
Powierzchnia dachu:	153.13 m <sup>2</sup>
Kąt nachylenia dachu:	25 degrees

### Koszty realizacji:

Realizacja stanu surowego otwartego:	37 930
Realizacja stanu surowego zamkniętego:	56 840
Koszt robót wykończeniowych:	71 480
Realizacja domu pod klucz:	128 320

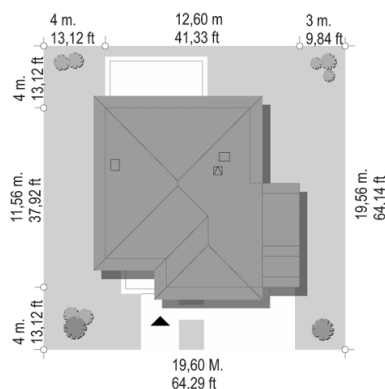
Koszty są podane w cenach netto, należy doliczyć podatek VAT

### Materiały:

- Foundations - concrete bench and foundation walls with concrete blocks
- External walls - brick walls - porotherm 25 blocks + polystyrene + thin-layer plaster
- Ceiling - Teriva
- Elevation - thin-layer plaster on polystyrene
- Roof - ceramic tile



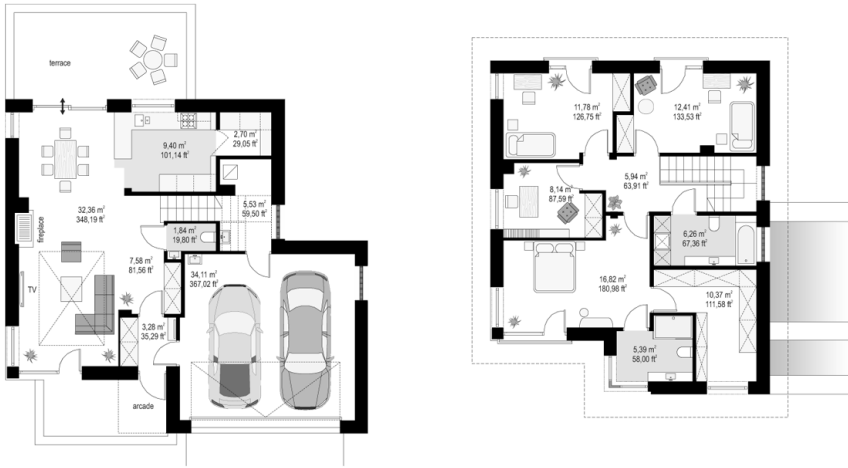
## CENA PROJEKTU: 1140.00 \$



	Energy-saving package	bezpł.
	Ventilation and fireplace package	90
	Central vacuum package	70
	The electronic version of the project	120
	Solar installation package	70
	Underfloor heating package	80
	Heat pump package	70
	Water jacket package	70
	Boiler for solid fuel package	80
	Air conditioning package	80
	Fencing projects	140
	Septic tanks sealed package	bezpł.

Titan 4 house plan is a new version of the popular project Titan. Storey house, designed for a family of 4-6 people with, a compact block, built on a rectangular plan, with build another double garage. House is designed in such a way as to fit the plot with unfavorable sunlight - for example, from the street from south. Simple body with, modern architectural expression, combined with a functional interior, gives a very favorable combination. House despite small usable space gives the impression of spacious and comfortable. On the ground floor designed one open space of living area with a hall, living room, dining area and kitchen. On the first floor we separated comfortable parents' bedroom with own bathroom and a really big wardrobe. Additionally, two bedrooms were designed for children, extra room (study room or bedroom), and a second bathroom. On the ground floor we have additionally, large garage for two cars, and a boiler room and near the kitchen pantry. The simple design of the house, its compact shape provide an inexpensive and uncomplicated construction, and subsequent low maintenance costs of the building. Technology, which were used very improve energy efficiency - perfect thermal insulation, mechanical ventilation with recuperation. External appearance of house: elevations divided into horizontal strips finished with various materials (plaster, wood, brick clinker). It gives the impression of modernity and proper proportions. Finishing details of elevation as: cornices, window sills, wall claddings, whether large glazing - they all create an attractive style of your house. Titan, is a solid, compact, functionally designed house, just in time for the family who wants to live in modern architecture. Simplicity of design will keep the construction cost under control, and energy-efficient solutions allow to achieve low operating costs of the building. There is also available mirror version of this house plan and w version with a single garage (Titan).

## Rzuty:



## Elewacje:

