

Dane techniczne:

Kubatura:	544 m ³
Powierzchnia zabudowy:	121.1 m ²
Powierzchnia całkowita:	190.11 m ²
Powierzchnia netto:	130.17 m ²
Powierzchnia użytkowa:	126.93 m ²
Wymiary domu:	12.59 x 10.94 m
Minimalne wymiary działki:	20.39 x 19.29 m
Wysokość do kalenicy:	7,83 m / 25,68 ft
Powierzchnia dachu:	211.6 m ²
Kąt nachylenia dachu:	40 degrees

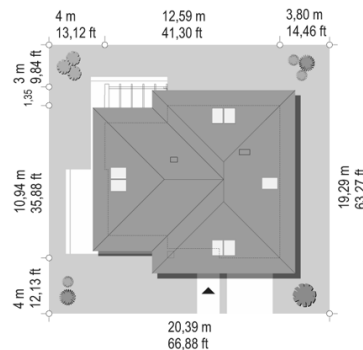
Koszty realizacji:

Realizacja stanu surowego otwartego:	38 670
Realizacja stanu surowego zamkniętego:	58 480
Koszt robót wykończeniowych:	59 880
Realizacja domu pod klucz:	118 000

Koszty są podane w cenach netto, należy doliczyć podatek VAT

Materiały:

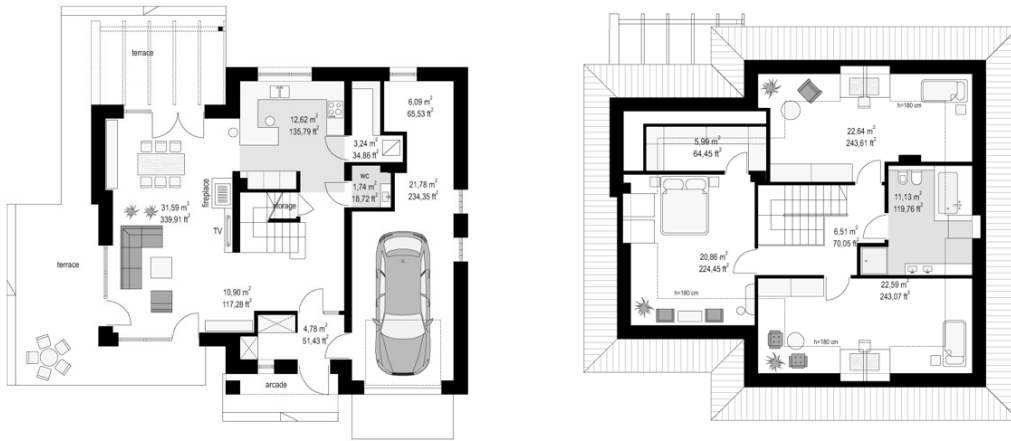
- Foundations - concrete bench and foundation walls with concrete blocks
- External walls - brick walls -porotherm 25 blocks + polystyrene + thin-layer plaster
- Ceiling - teriva
- Elevation - thin-layer plaster on polystyrene
- Roof - tile or metal roofing tile

**CENA PROJEKTU: 1040.00 \$**

	Energy-saving package	bezpł.
	Ventilation and fireplace package	90
	Central vacuum package	70
	The electronic version of the project	120
	Solar installation package	70
	Underfloor heating package	80
	Heat pump package	70
	Water jacket package	70
	Boiler for solid fuel package	80
	Air conditioning package	80
	Fencing projects	140
	Septic tanks sealed package	bezpł.

Inverted house plan, is a single-family house designed for a family of four, it is one-storeyed with a usable attic, perfect on a plot of land entering from the south. The house was designed on a plan similar to the letter T. The ground floor with the attic is covered with a multi-symmetrical roof. The roof of the house is set on high elbow walls, thanks to which completely nice rooms were obtained in the attic. Modern architecture combines a varied building's silhouette, interesting details and fashionable materials and colors. Large glazing of windows and wooden cladding of walls are undoubted decoration of the façade. The design of the Inverted house, as the name suggests, was designed to be suitable for a plot with an unfavorable location in relation to the world sides - for example, with an access road from the south. House can be used on a wider plot with a garden on the side, or on a plot of land with a garden in front of the house, or set it on a plot with garden in the back - as investors usually decide. Then, thanks to the large glazing of the living area from the front and the side, the interior of the house will still be well-lit. Unfavorable plot does not have to be a bad solution - it's enough to have a good design, and Inverted house is an excellent proposition. Terraces can be made as shown in the house plan - from both sides of the house, or you can choose one terrace. The interior of the house is an open space of the living room, hall, dining room and very nice kitchen with a pantry. In the central place of the plan we have an elegant staircase to the attic. From the vestibule with the cloakroom, we turn sideways to the garage and utility room. From the back side of garden, a charming patio with a pergola based on a beam protruding from the wall was designed. In the attic there are three nice bedrooms and a shared large bathroom. The parents' bedroom has a separate wardrobe. The house, although of small size, contains all the functions needed for a comfortable life for a full family. The uncomplicated shape and simple construction will allow for a cost-effective construction, and because of the good insulation and energy-saving installations used, the costs of later maintenance will also not be high. Inverted house is a good offer for investors having a "reverse" plot, with entry from the south, wanting to build a small modern house with an attic.

Rzuty:



Elewacje: