

## Dane techniczne:

Kubatura:	637 m <sup>3</sup>
Powierzchnia zabudowy:	170.45 m <sup>2</sup>
Powierzchnia całkowita:	170.45 m <sup>2</sup>
Powierzchnia netto:	113.46 m <sup>2</sup>
Powierzchnia użytkowa:	109.07 m <sup>2</sup>
Wymiary domu:	14.3 x 17.85 m
Minimalne wymiary działki:	22.3 x 24.85 m
Wysokość do kalenicy:	6,60 m / 21,65 ft
Powierzchnia dachu:	258 m <sup>2</sup>
Kąt nachylenia dachu:	30 degrees

## Koszty realizacji:

Realizacja stanu surowego otwartego:	44 540
Realizacja stanu surowego zamkniętego:	65 150
Koszt robót wykończeniowych:	62 570
Realizacja domu pod klucz:	127 720

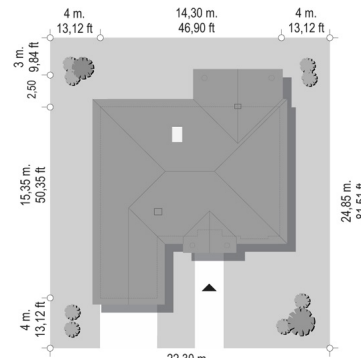
Koszty są podane w cenach netto, należy doliczyć podatek VAT

## Materiały:

- Foundations - concrete bench and foundation walls with concrete blocks
- External walls - brick walls -porotherm 25 blocks + polystyrene + thin-layer plaster
- Ceiling - wooden beam
- Elevation - thin-layer plaster on polystyrene
- Roof - tile or metal roofing tile



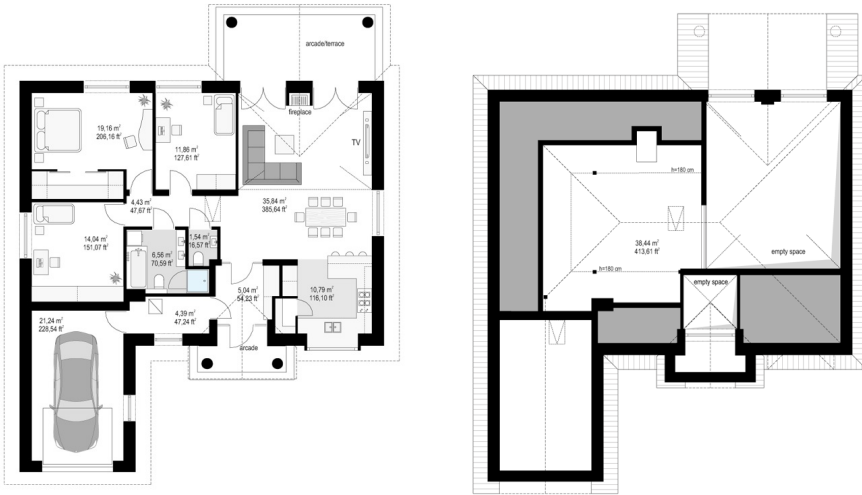
## CENA PROJEKTU: 1090.00 \$



	Energy-saving package	bezpł.
	Ventilation and fireplace package	90
	Central vacuum package	70
	The electronic version of the project	120
	Solar installation package	70
	Underfloor heating package	80
	Heat pump package	70
	Water jacket package	70
	Boiler for solid fuel package	80
	Air conditioning package	80
	Fencing projects	140
	Septic tanks sealed package	bezpł.

House on Park Street 2 is the cheapest, most economical version of the projects from the series of House on Park Street. This house plan is narrower and smaller than the base version, has a single garage, there is no attic (only an attic with pull-out ladder stairs), and the ceiling above the ground floor is designed in a wooden beam construction instead of a monolithic board - to lower the cost of implementation. At the same time, the ceiling was designed with a cladding of OSB boards over the gypsum plasterboard panel cladding, in order to avoid potential scratches on the ceilings. The architecture of the house is a reference to American suburban villas, and partly to the Polish manor house. The exterior of the house is classic - its interior has a contemporary, functional program and layout. The interior is divided into a living area, with a nice living room with dining room, connected to the hall and kitchen, and a night part with three bedrooms and a bathroom. Children's bedrooms have built-in wardrobes, a built-in wardrobe, a parents' bedroom - a dressing room. From the comfortable vestibule with wardrobes, we also get to the economic and garage part of the house - to the boiler room and garage. In the attic, the free storage space of the house was left. This small house due to the compact rectangular shape and sensible interior, is very functional, and thanks to the built-in wardrobes, pantry, wardrobe, attic, is very "capacious". The architecture of the house is calm and toned, it operates traditional details with the preservation of distance and taste. The front of the house is decorated with a representative entrance with wide doors, and from the rear elevation we have a large covered terrace with wide glazing that opens the living room to the garden. The house is a great proposition for people who, for financial or simply practical reasons, do not want to have a very large house, but also want to achieve maximum comfort and a sense of luxury within a limited space. At the same time, the materials, insulation and installations used in the project will make the building simple and inexpensive to build, and cheap in later maintenance.

## Rzuty:



## Elewacje:

