

Dane techniczne:

Kubatura:	538 m ³
Powierzchnia zabudowy:	139.57 m ²
Powierzchnia całkowita:	174.25 m ²
Powierzchnia netto:	119.53 m ²
Powierzchnia użytkowa:	114.48 m ²
Wymiary domu:	14.1 x 11.76 m
Minimalne wymiary działki:	21.1 x 19.76 m
Wysokość do kalenicy:	6,39 m / 20,96 ft
Powierzchnia dachu:	164.7 m ²
Kąt nachylenia dachu:	30 degrees

Koszty realizacji:

Realizacja stanu surowego otwartego:	33 950
Realizacja stanu surowego zamkniętego:	53 730
Koszt robót wykończeniowych:	59 360
Realizacja domu pod klucz:	113 090

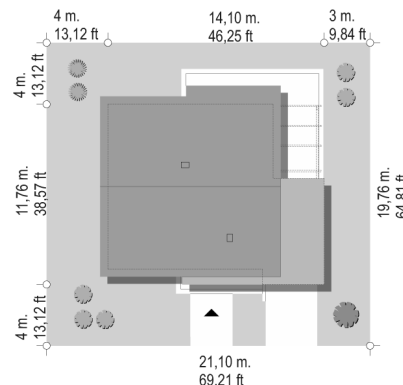
Koszty są podane w cenach netto, należy doliczyć podatek VAT

Materiały:

- Foundations - concrete bench and foundation walls with concrete blocks
- External walls - brick walls - aerated 24 blocks + polystyrene + thin-layer plaster
- Ceiling - monolithic reinforced concrete
- Elevation - thin-layer plaster on polystyrene
- Roof - ceramic tile



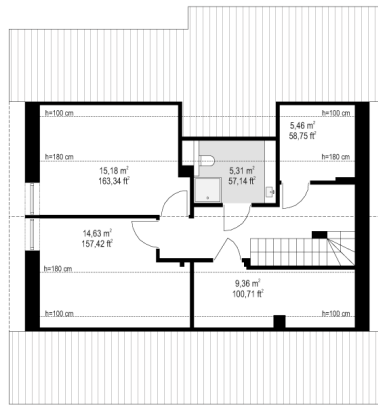
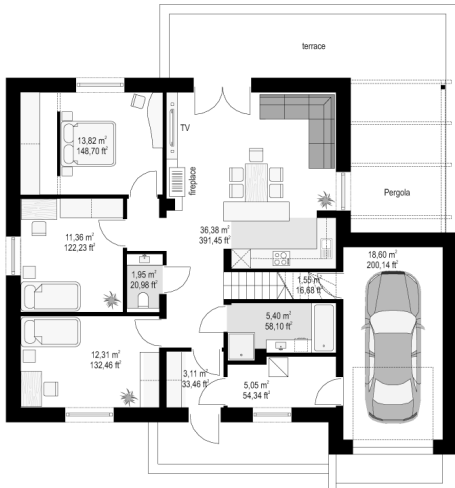
CENA PROJEKTU: 1020.00 \$



	Energy-saving package	bezpł.
	Ventilation and fireplace package	90
	Central vacuum package	70
	The electronic version of the project	120
	Solar installation package	70
	Underfloor heating package	80
	Heat pump package	70
	Water jacket package	70
	Boiler for solid fuel package	80
	Air conditioning package	80
	Fencing projects	140
	Septic tanks sealed package	bezpł.

Sophie 7 B house plan is a variant version of the project Sophie - the largest, maximally developed version of the house in this series, with a square plan of 10.7 x 10.7 m, and with a built-in garage. The house still has - like the other designs from the Sophie series - a simple shape and structure, but it has gained a modern charm and is varied in details like a garage with a flat roof, or a garage with a roof covering the entrance door, or a pergola covering part of the garden terrace. The house, despite a few variations, thanks to its simplicity is easy to build, and therefore inexpensive. At the same time, it functions functionally one hundred percent of the requirements of a comfortable flat for a four- or six-person family. The building was covered with a gable roof with an angle of 30 degrees. Above the ground floor there is a concrete ceiling and an attic with two rooms, to which we get a staircase between the kitchen and the bathroom. We enter the house through the vestibule with a large wardrobe to the lobby and the living room. On the side at the entrance, we go to the boiler room and then to the garage. The boiler room was designed as a gas, but it can be easily converted into a solid fuel boiler. We have a bathroom and stairs (there is a practical storage under the stairs from the garage side). On the left side we have three bedrooms, including a parents' bedroom with a wardrobe. The remaining part of the interior is a living room with a kitchenette of approximately 35 m². From the living room we get out to the garden and the terraces. The L-shaped terrace is partially exposed and partially covered by a pergola. An additional two rooms and a bathroom are designed in the attic. Of course, an attic can be left as a free space, without divisions into rooms, or it can simply be an attic that will be developed in the future. The house is very functional and has an extensive program of rooms. There is no wasted space here - everything is practically used. The house has an unpretentious and pleasing to the eye style. The decisive advantage of the Sophie series houses is their simplicity and functionality, translating into the maximum investment effect obtained for little money. Each subsequent version of the house from this series we try to design even better and more sensibly. The house is designed as energy-saving, very well insulated. It will be cheap in later exploitation

Rzuty:



Elewacje:

