

## Dane techniczne:

Kubatura:	1061 m <sup>3</sup>
Powierzchnia zabudowy:	267.84 m <sup>2</sup>
Powierzchnia całkowita:	267.84 m <sup>2</sup>
Powierzchnia netto:	177.39 m <sup>2</sup>
Powierzchnia użytkowa:	171.76 m <sup>2</sup>
Wymiary domu:	19.86 x 19.65 m
Minimalne wymiary działki:	27.86 x 27.65 m
Wysokość do kalenicy:	6,59 m / 21,62 ft
Powierzchnia dachu:	391.6 m <sup>2</sup>
Kąt nachylenia dachu:	30 degrees

## Koszty realizacji:

Realizacja stanu surowego otwartego:	59 430
Realizacja stanu surowego zamkniętego:	92 300
Koszt robót wykończeniowych:	83 220
Realizacja domu pod klucz:	175 510

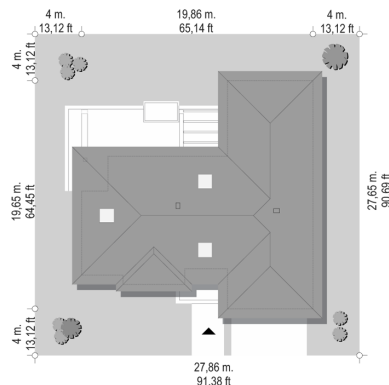
Koszty są podane w cenach netto, należy doliczyć podatek VAT

## Materiały:

- Foundations - concrete bench and foundation walls with concrete blocks
- External walls - brick walls - porotherm 25 blocks + polystyrene + thin-layer plaster
- Ceiling - monolithic reinforced concrete
- Elevation - thin-layer plaster on polystyrene
- Roof - ceramic tile



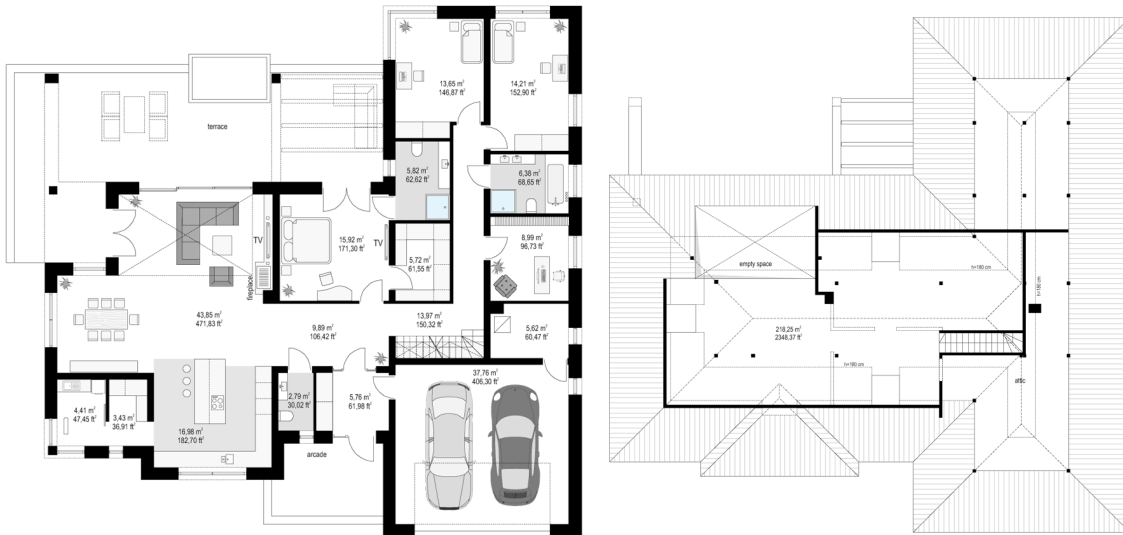
## CENA PROJEKTU: 1240.00 \$



	Energy-saving package	bezpł.
	Ventilation and fireplace package	90
	Central vacuum package	70
	The electronic version of the project	120
	Solar installation package	70
	Underfloor heating package	80
	Heat pump package	70
	Water jacket package	70
	Boiler for solid fuel package	80
	Air conditioning package	80
	Fencing projects	140
	Septic tanks sealed package	bezpł.

The ground floor villa is a representative one-story single-family house for a family of 4-5 people. A real comfortable villa for investors determined to live on the ground floor - without running up the stairs. The house, although it is not large and its usable area is just over 170 m<sup>2</sup>, was designed with American panache. From the very entrance we are welcomed by a wide, impressive front elevation, with beautifully accented entrance doors. From the garden side is even better - arranged in the letter L solid with a terrace - with an inner patio, partial roofing and pergola. Great place for home parties, but also for a quiet evening after work. We designed the building on the T-plane plan, with the main rectangular block covered with a hipped roof and built-up parts of the garage and bedroom. The style of the house is moderate modernity. Thanks to the large glazing, colors and materials used, the house looks modern but not extravagant. We enter the interior through the vestibule to the lobby and from there to one side to the living area - with a beautiful living room, dining room and kitchen, and the other side to the night part of the house. The living room with a fireplace and TV wall is connected to the terrace with wide sliding glazing. The living room was designed with a spatial opening - emptiness. In the version with developed attic in the attic we have above the balustrade and mezzanine. In the version with no use attic - just the empty space above the living room. In the dining room we have an entire wall on the sideboard - a rare convenience. The kitchen is designed a large island, and next to the kitchen room pantry and laundry - in American, the lady of the house has all the equipment at hand. In the night part there is a parents' apartment with a wardrobe and a bathroom, two children's bedrooms with built-in wardrobes and a bathroom, and an additional room that can be a bedroom or a study. A double garage and boiler room are also planned from the front of the house. The attic can remain a non-usable space - a home storehouse of various things, or it can be adapted to the usable area, thus obtaining an additional ca. 35 m<sup>2</sup>. A one-story villa is a great proposition for investors dreaming about contact with the garden and nature, about the comfort of living on one floor - without going up the stairs. Certainly, the house is designed for people with a slightly larger plot - a minimum of about 700-800 m<sup>2</sup>. We designed the building as energy-saving. The construction of the house is uncomplicated and the house will be inexpensive to operate.

## Rzuty:



## Elewacje:

