

## Dane techniczne:

Kubatura:	467 m <sup>3</sup>
Powierzchnia zabudowy:	94.21 m <sup>2</sup>
Powierzchnia całkowita:	144.07 m <sup>2</sup>
Powierzchnia netto:	96.58 m <sup>2</sup>
Powierzchnia użytkowa:	93.84 m <sup>2</sup>
Wymiary domu:	11.59 x 9.2 m
Minimalne wymiary działki:	18.59 x 18.1 m
Wysokość do kalenicy:	7,80 m / 25,58 ft
Powierzchnia dachu:	163.93 m <sup>2</sup>
Kąt nachylenia dachu:	42 i 35 degrees

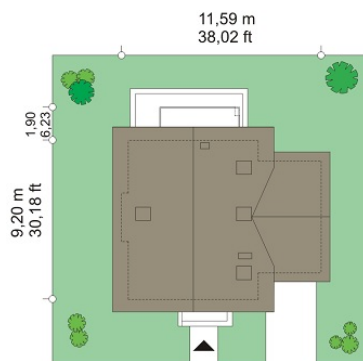
## Koszty realizacji:

Realizacja stanu surowego otwartego:	29 300
Realizacja stanu surowego zamkniętego:	44 200
Koszt robót wykończeniowych:	43 500
Realizacja domu pod klucz:	87 600

Koszty są podane w cenach netto, należy doliczyć podatek VAT

## Materiały:

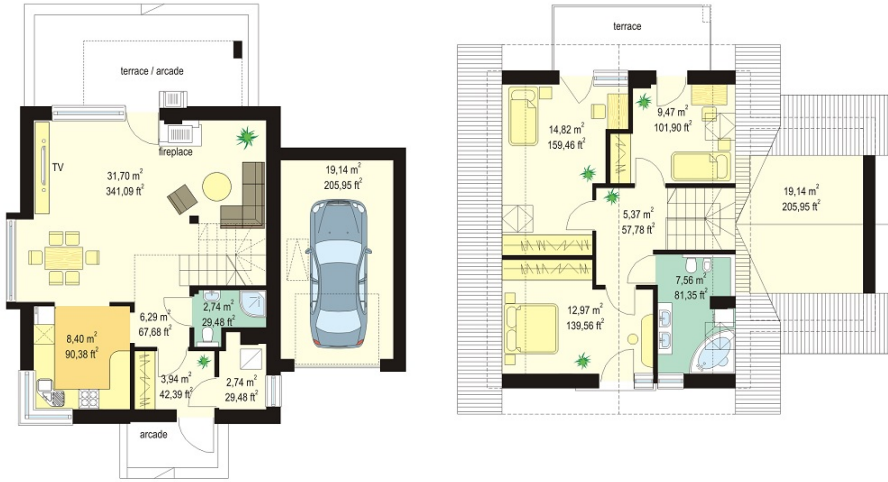
- Foundations: concrete benches and foundation walls of concrete blocks
- External walls: brick walls - airbrick porotherm 25 + polystyrene + thin-layer plaster
- Ceiling: Teriva
- Elevations: thin-layer plaster on polystyrene
- Roofing: ceramic tile

**CENA PROJEKTU: 900.00 \$**

	Energy-saving package	bezpł.
	Ventilation and fireplace package	90
	Central vacuum package	70
	The electronic version of the project	120
	Solar installation package	70
	Underfloor heating package	80
	Heat pump package	70
	Water jacket package	70
	Boiler for solid fuel package	80
	Air conditioning package	80
	Fencing projects	140
	Septic tanks sealed package	bezpł.

Gucio 2 house plan is a family bungalow with usable attic for a family of 4 - 5 people. One story house covered by gable roof with a garage extended to the main body of house. The house is designed to give maximum comfort for future residents, creating an open living space, characteristic for large houses. Living room with hall, dining area with bay window, exposed stately staircase will be a great place to live for future household. The fireplace is located on an outside wall, you can enjoy with views of the garden at the same time. Large glass doors lead from the living room to the partially covered terrace. On the ground floor there is also a comfortable kitchen, hall, boiler room, wc with a shower and a garage. In the attic there is in addition three comfortable bedrooms with small "slants" and fitted wardrobes. There is also designed a nice bathroom. Above the garage is located an attic available from the garage. The architecture of house emphasizes simplicity of forms, modernity in the selection of materials, all this things creates a successful composition. The house is simple in construction and inexpensive to maintain later. 2 There is also available a mirror version of Gucio 2 house plan.

## Rzuty:



## Elewacje:

