

## Dane techniczne:

Kubatura:	679 m <sup>3</sup>
Powierzchnia zabudowy:	137.6 m <sup>2</sup>
Powierzchnia całkowita:	216.74 m <sup>2</sup>
Powierzchnia netto:	180.2 m <sup>2</sup>
Powierzchnia użytkowa:	170.92 m <sup>2</sup>
Wymiary domu:	14.71 x 10.01 m
Minimalne wymiary działki:	20.71 x 18.25 m
Wysokość do kalenicy:	7,25 m / 23,78 ft
Powierzchnia dachu:	214 m <sup>2</sup>
Kąt nachylenia dachu:	35 degrees

## Koszty realizacji:

Realizacja stanu surowego otwartego:	40 300
Realizacja stanu surowego zamkniętego:	58 700
Koszt robót wykończeniowych:	57 300
Realizacja domu pod klucz:	115 900

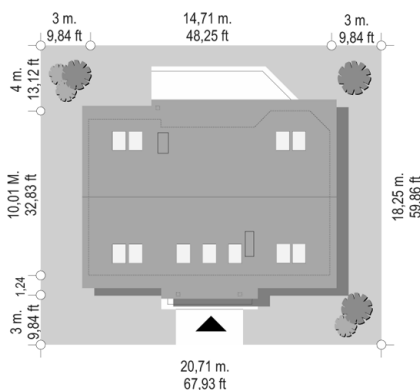
Koszty są podane w cenach netto, należy doliczyć podatek VAT

## Materiały:

- Foundations: concrete benches, walls of concrete blocks
- External walls: bilayer airbrick porotherm
- Ceiling: Teriva
- Elevations: thin-layer plaster
- Roofing: ceramic tile



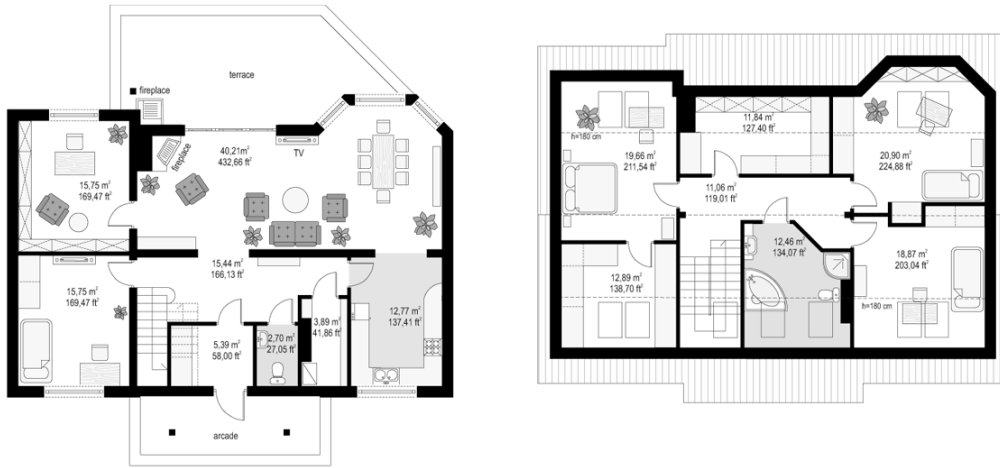
## CENA PROJEKTU: 970.00 \$



	Energy-saving package	bezpł.
	Ventilation and fireplace package	90
	Central vacuum package	70
	The electronic version of the project	120
	Solar installation package	70
	Underfloor heating package	80
	Heat pump package	70
	Water jacket package	70
	Boiler for solid fuel package	80
	Air conditioning package	80
	Fencing projects	140
	Septic tanks sealed package	bezpł.

Sparkle house plan is a simple solid covered with a gable roof. This house plan was created for a family of four-five people. There are no windows in the side elevations so the house can be built in a plot with a width of 20.7 m. On the ground floor there is a large living room with fireplace (additional fireplace is on the terrace) connected with a dining room and two other rooms. On the attic there are three bedrooms with bathroom and a dressing room. The construction of the house allows to adopt rooms on the ground floor at the garage with utility room, or save up extra bathroom. Sparkle house plan is also available in a mirror version.

## Rzuty:



## Elewacje:

