

## Dane techniczne:

Kubatura:	614 m <sup>3</sup>
Powierzchnia zabudowy:	166.11 m <sup>2</sup>
Powierzchnia całkowita:	214.18 m <sup>2</sup>
Powierzchnia netto:	177.68 m <sup>2</sup>
Powierzchnia użytkowa:	150.08 m <sup>2</sup>
Wymiary domu:	9 x 24.27 m
Minimalne wymiary działki:	16 x 32.27 m
Wysokość do kalenicy:	6,21 m / 20,37 ft
Powierzchnia dachu:	274.7 m <sup>2</sup>
Kąt nachylenia dachu:	35 degrees

## Koszty realizacji:

Realizacja stanu surowego otwartego:	44 100
Realizacja stanu surowego zamkniętego:	63 900
Koszt robót wykończeniowych:	59 000
Realizacja domu pod klucz:	122 800

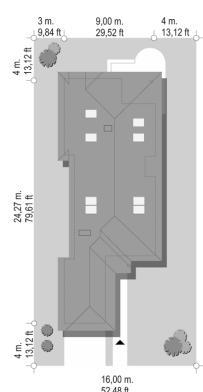
Koszty są podane w cenach netto, należy doliczyć podatek VAT

## Materiały:

- Foundations - reinforced concrete
- Exterior walls - aerated concrete + polystyrene
- Ceiling - reinforced concrete Teriva
- Elevation - thin-layer plaster
- Roof - ceramic or metal tile



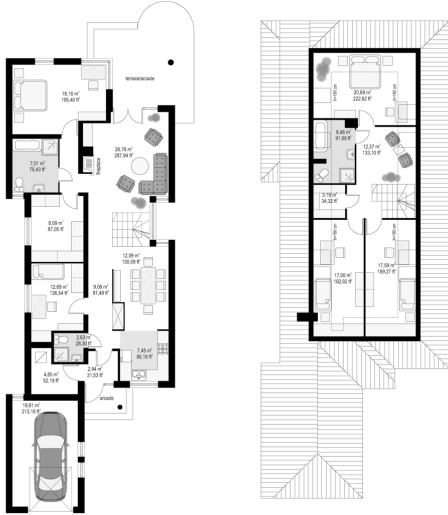
## CENA PROJEKTU: 940.00 \$



	Energy-saving package	bezpł.
	Ventilation and fireplace package	90
	Central vacuum package	70
	The electronic version of the project	120
	Solar installation package	70
	Underfloor heating package	80
	Heat pump package	70
	Water jacket package	70
	Boiler for solid fuel package	80
	Air conditioning package	80
	Fencing projects	140
	Septic tanks sealed package	bezpł.

Dachshund 2 house plan is a convenient building on a very narrow plot - even a 15-meter. The solid of the house and a garage is covered by the hipped roof. A garage has been added to the house. The interior of the house is planned is such way to be able to live on the ground floor in the first stage of building. Attic, which provides additional rooms can be exploited already living or leave the attic unfinished. The attic can be exploited for utility rooms. Interior of living room, dining room and lobby creates a large open space. From the living room you can go out to the covered terrace. This house plan is also available in mirror version.

## Rzuty:



## Elewacje:

