

## Dane techniczne:

Kubatura:	788 m <sup>3</sup>
Powierzchnia zabudowy:	161.38 m <sup>2</sup>
Powierzchnia całkowita:	264.9 m <sup>2</sup>
Powierzchnia netto:	184.89 m <sup>2</sup>
Powierzchnia użytkowa:	177.79 m <sup>2</sup>
Wymiary domu:	16.05 x 13.26 m
Minimalne wymiary działki:	24.05 x 21.26 m
Wysokość do kalenicy:	8,56 m / 28,08 ft
Powierzchnia dachu:	304.68 m <sup>2</sup>
Kąt nachylenia dachu:	45 degrees

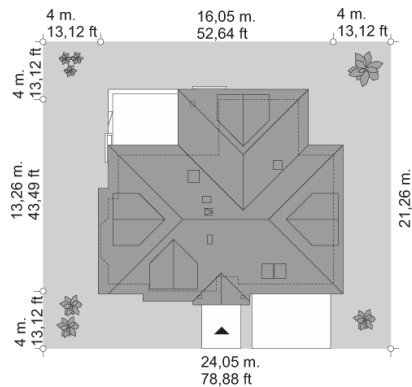
## Koszty realizacji:

Realizacja stanu surowego otwartego:	60 100
Realizacja stanu surowego zamkniętego:	85 600
Koszt robót wykończeniowych:	64 600
Realizacja domu pod klucz:	150 100

Koszty są podane w cenach netto, należy doliczyć podatek VAT

## Materiały:

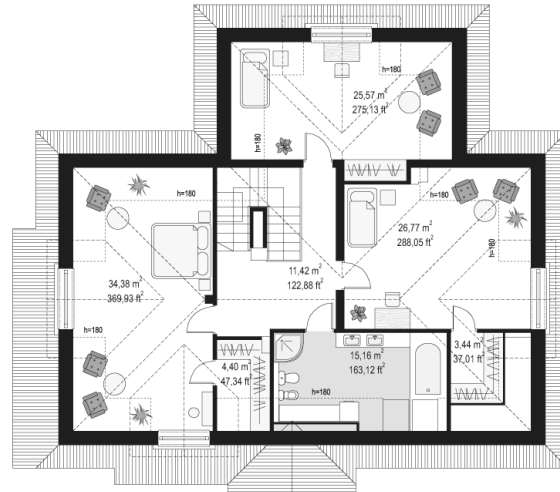
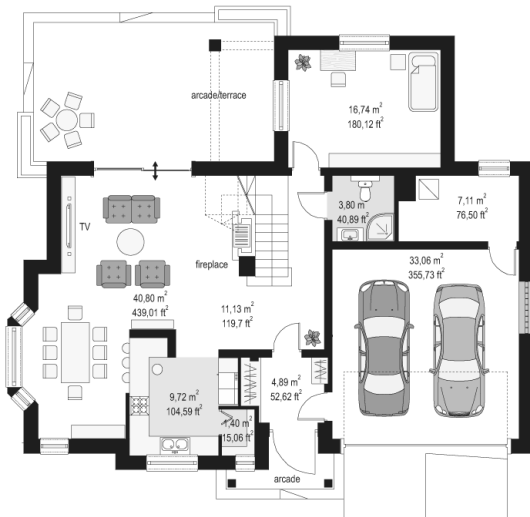
- Foundations - concrete benches and foundation walls with concrete blocks
- Exterior walls - brick walls - airbricks porotherm 25 + polystyrene + plaster thin
- Ceiling - TERIVA
- Elevation - thin-layer plaster on polystyrene
- Roof - tile

**CENA PROJEKTU: 1070.00 \$**

	Energy-saving package	bezpł.
	Ventilation and fireplace package	90
	Central vacuum package	70
	The electronic version of the project	120
	Solar installation package	70
	Underfloor heating package	80
	Heat pump package	70
	Water jacket package	70
	Boiler for solid fuel package	80
	Air conditioning package	80
	Fencing projects	140
	Septic tanks sealed package	bezpł.

Ash tree 2 house plan is a variant version of the house Ash tree. In response to the customers suggestions who likes the original house plan but looking for a smaller, more economical home MgProjekt create Ash tree 2 house plan. Ash tree 2 house is almost a third less than the basic version, but has the same beautiful and comfortable interior. Ash tree 2 is a one-storey building, with an attic, provided for a family of four-five people. The built plan based on a "T" letter is covered by a hipped roof. Just as in the original house plan in the inner corner of the building is a peaceful terrace, and an arcade, where you can relax on the covered terrace. Architecturally, the house is a classic Polish "roofers", does not aspire to the image of modern, extravagant forms. The building is suburban and its function is to connect residents with the surrounding nature and other similar houses. In the interior of the house on the ground floor there is a living room combined with lounge and dining area, and semi-open kitchen. From the living room you can see a centrally located staircase and fireplace wall, from the living room there is also the entrance into a terrace. From the lobby we go to the extra room - office or extra bedroom. On the other side there is the entry garage and boiler room. On the attic there are three large bedrooms with a dressing rooms and cabinets and a large bathroom - bath room. Ash tree 2 house plan is also available in a mirror version.

## Rzuty:



## Elewacje:

